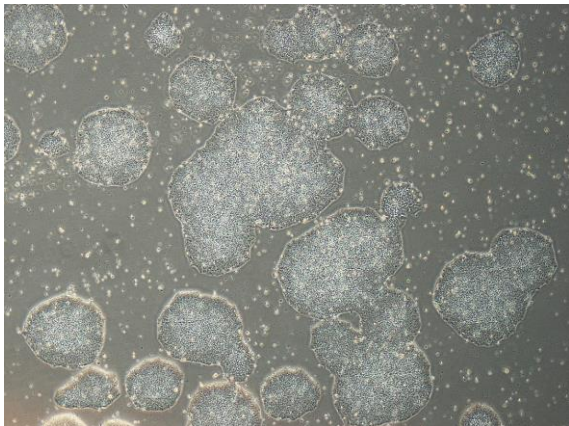
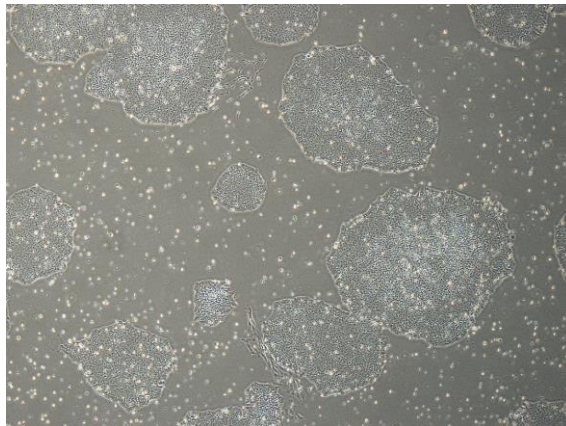


【 CiRA-j-1357 】 Morphology of iPSC colonies

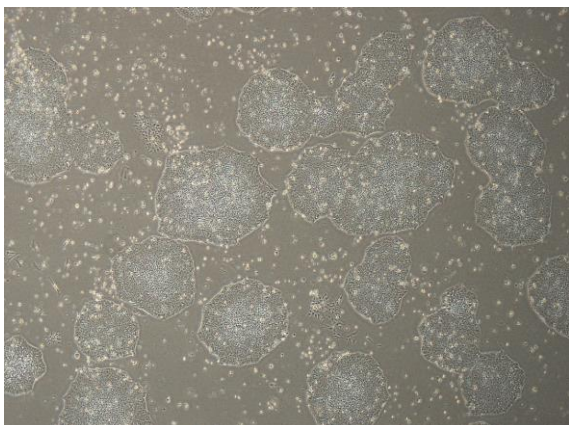
CiRA-j-1357-A: passage-3



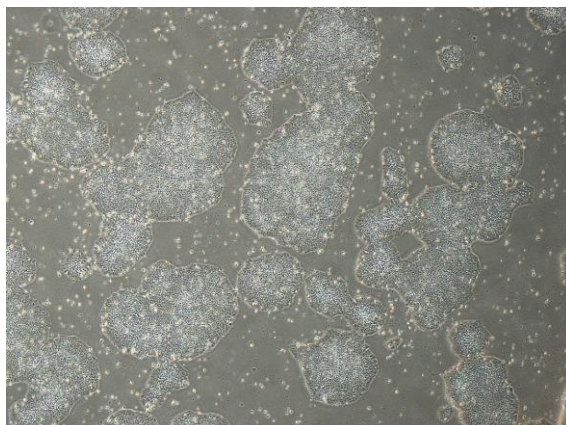
CiRA-j-1357-B: passage-3



CiRA-j-1357-C: passage-3



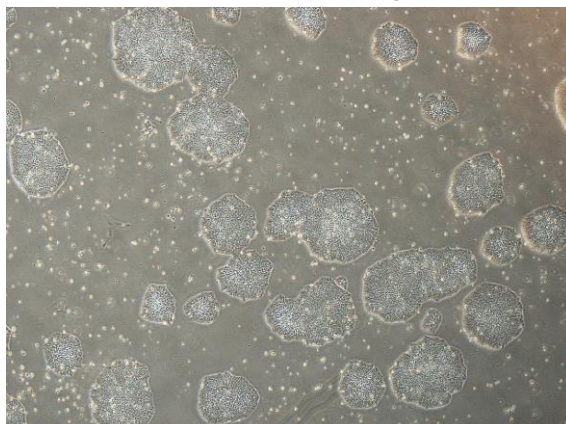
CiRA-j-1357-D: passage-3



CiRA-j-1357-E: passage-3



CiRA-j-1357-F: passage-3



(All images were captured at 4x magnification)